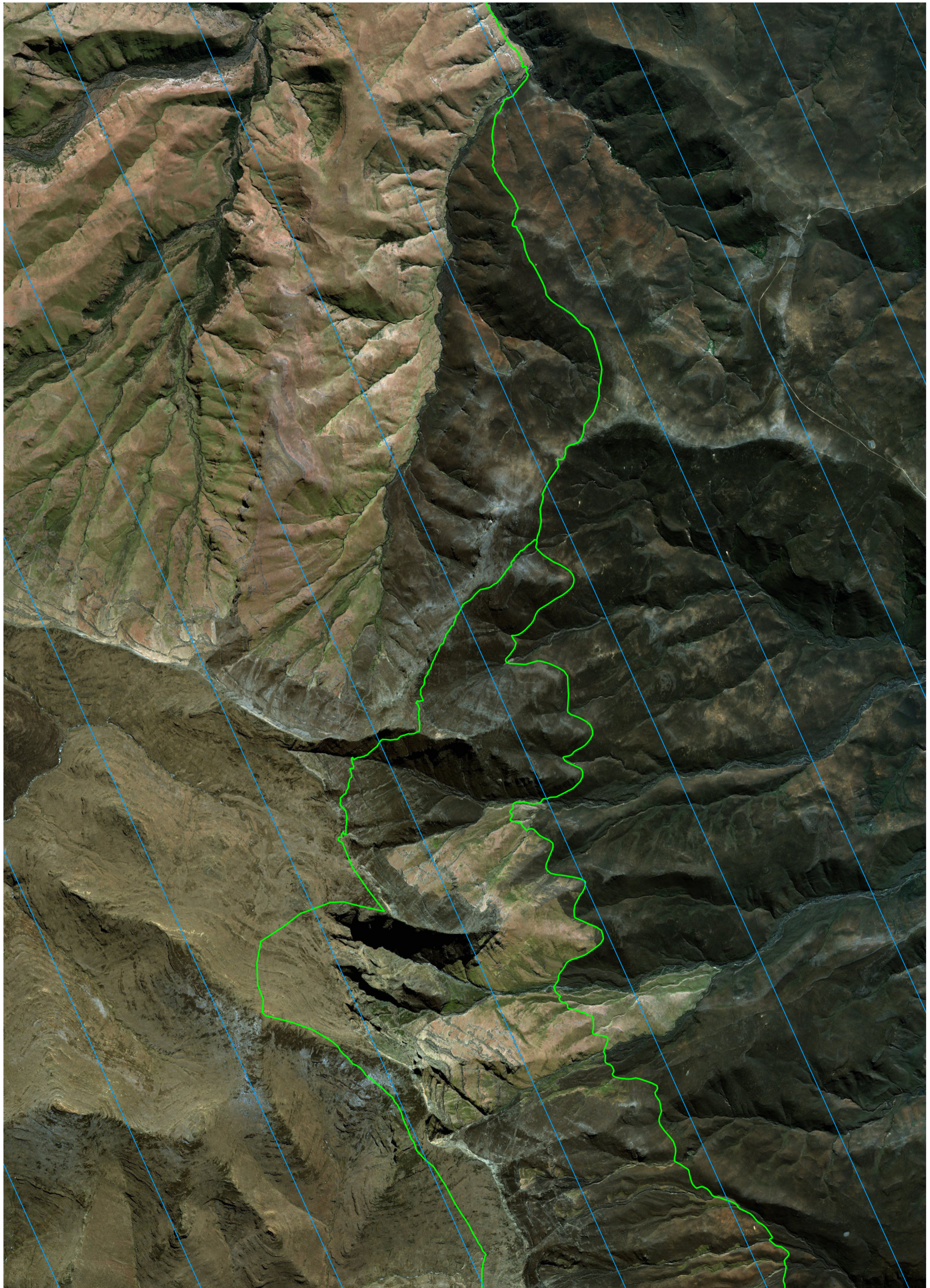


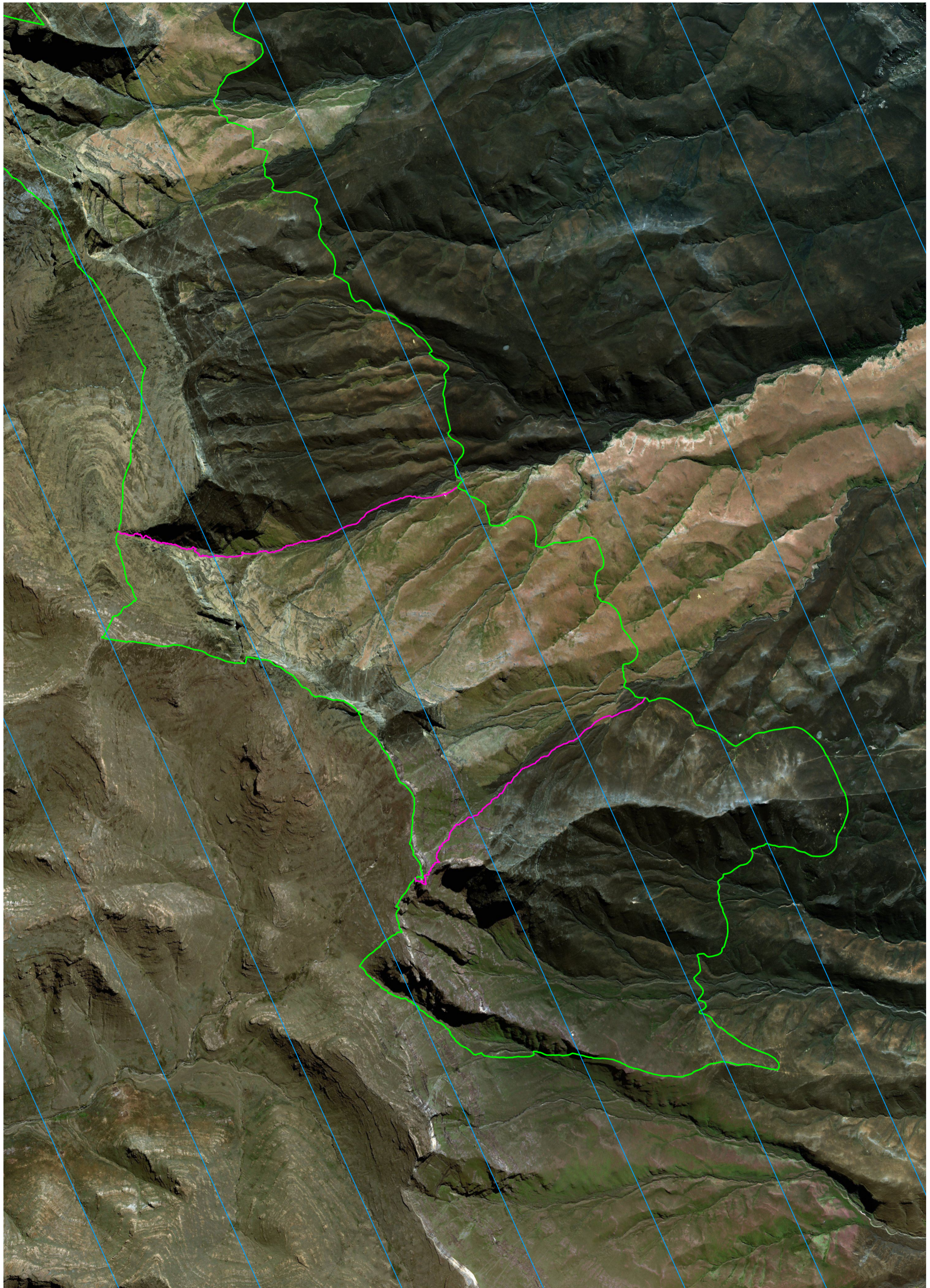
500 0 500 1000 1500 2000 m

Magnetic declination -24.28 degrees on 1 Feb 2020. Rate of change 0.18 degrees West per year.
Magnetic declination lines shown in light blue.
Planned route - light green



500 0 500 1000 1500 2000 m

Magnetic declination -24.28 degrees on 1 Feb 2020. Rate of change 0.18 degrees West per year.
Magnetic declination lines shown in light blue.
Planned route - light green



500 0 500 1000 1500 2000 m

Magnetic declination -24.28 degrees on 1 Feb 2020. Rate of change 0.18 degrees West per year.
Magnetic declination lines shown in light blue.
Planned route - light green